



Hilldale Public Schools

Elementary School Traffic Procedures

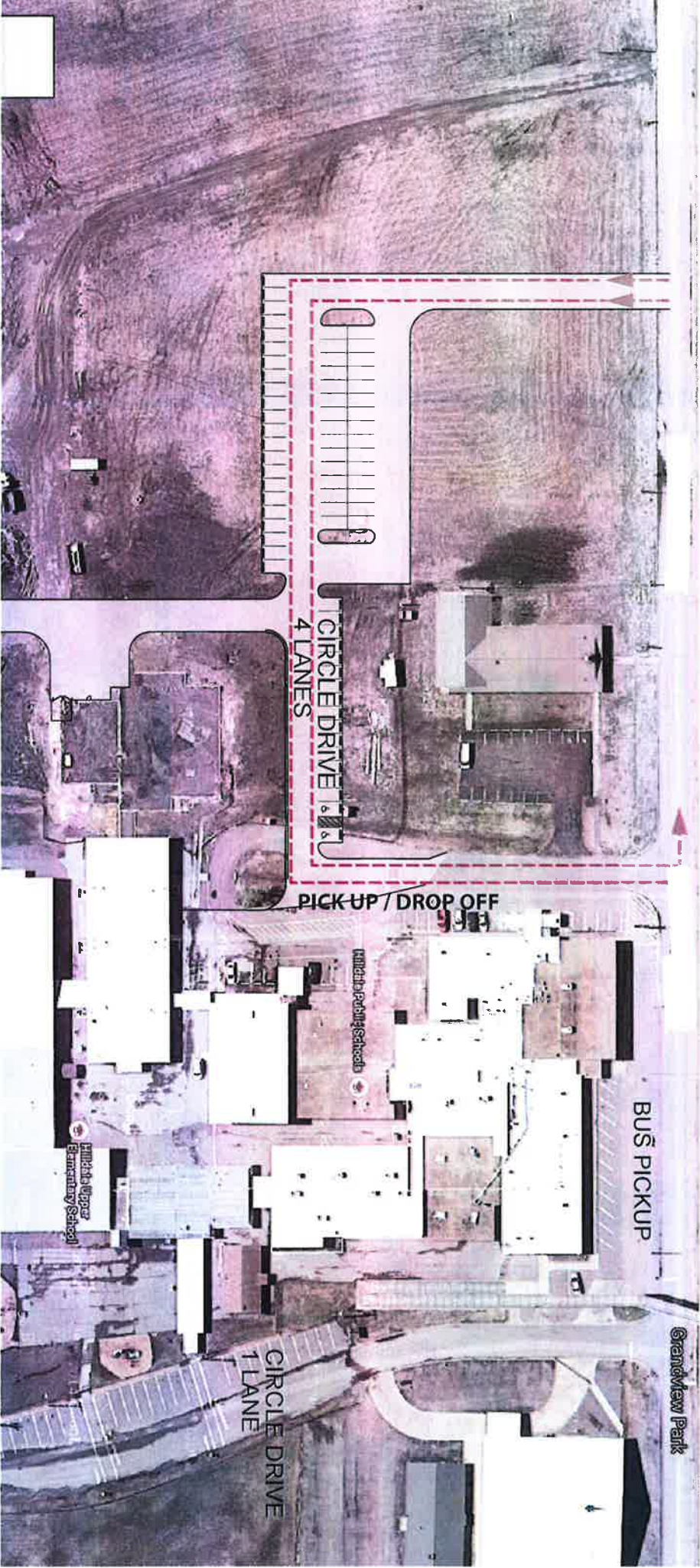
As you know, we continue to work to improve safety for our students in several ways. The arrival and release of nearly 1,000 students at the Elementary sites provides challenges. We ask for cooperation from all parents to help keep all students safe.

- Traffic at the beginning of each school year is typically heavy. This improves as everyone learns the procedures, however, we must continuously re-evaluate what is safe and feasible for student drop-off and pick-up.
- Morning drop-off has improved. **All students are expected to be in class at 8:15 each school day.** *Please do not drop students at the building until 7:30 a.m. as supervision is not available.* Those at school between 7:30 and 7:45 either go to eat breakfast in the cafeteria, go to the old gym (K-2), go to the library (3-4), or go to the new gym (5th) awaiting dismissal to their classrooms. After 8:15 students must go to the office to receive a tardy slip.
- **Circle drive will close at 8:10.** This will ensure that our teachers and staff can make it to class by 8:15. **Teachers will go inside at 8:10 and parents will need to walk your child to the office door.**
- **Afternoon dismissal of students will occur at 3:15.**
- **CIRCLE DRIVE**
Families will stay in their vehicle to drop-off or pick-up students on both sides of the elementary.
- ❖ **West Side Circle Drive** - We will have 4 lanes of cars on this side. Please enter in the lane that you are wanting to exit. Changing lanes as you are leaving is not encouraged as we have had accidents happen because of this.
- ❖ **East Side Circle Drive** - We will have 1 lane of cars on this side. Once you drop off or pick up your student you will circle around the softball field parking lot to exit.
- **BUSES**
Buses will drop-off and pick-up on the front (north side) of Elementary. Therefore, no vehicles will be allowed on the north side of the Elementary prior to 8:10 in the morning or after 2:30 in the afternoon. Students cannot be dropped-off or picked-up in this area. **Circle Drive** is available for families wanting to drop-off or pick-up students.
- **CROSSWALK**
Crosswalk students will be taken to the south side of the crosswalk and escorted across by a staff member. *There is no staff supervision on the north side of the crosswalk.* Should there be a weather threat for the crosswalk, a red flag will be displayed on the North side of the Elementary, to indicate that the crosswalk is closed until students can safely cross. In that instance, students will be at the east side circle drive. Please do not drop-off or pick-up students on the school side of the crosswalk.

*There will be NO Walk Up at this time.

The Elementary staff works hard to keep your child safe. Please treat them courteously and assist us by following these procedures. Talk to your student in advance as to where they need to go before and after school and help them understand the need to keep them secure at school.

While safety is often not convenient, we will continue to “fine tune” as we can. We appreciate your patience and help in providing a safe environment at these busy times!



HILLDALE TRAFFIC FLOW [ELEMENTARY]